

VersaBlue® Adhesive Melter



12 and 25 liter melters

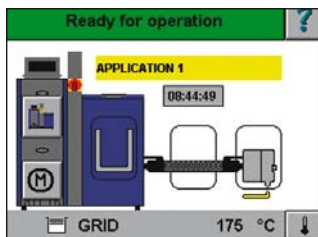
Nordson VersaBlue melters are designed for precise, demanding hot melt adhesive applications. A choice of metering spur-gear pumps with variable-speed AC motors satisfies a wide range of manufacturing requirements. A grid and reservoir tank design reduces adhesive degradation while maximizing adhesive throughput. A VxWorks®-based industrial PC provides full control of the adhesive system via a touch-screen interface.

VersaBlue melters:

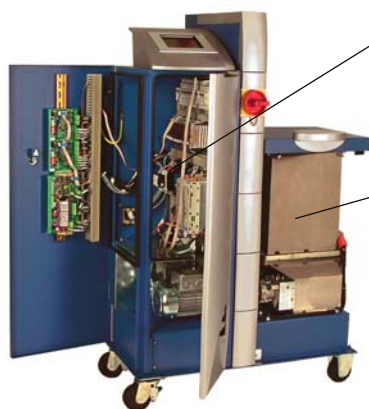
- Install quickly and easily
- Provide easy day-to-day operation
- Simplify routine maintenance
- Maximize uptime
- Serve a broad range of industries



Large, accessible tank opening allows easier filling and cleaning



Graphical, touch-screen system control with status display of the tank, hose(s) and gun(s)



Entry panels make access to melter components quick and easy



Pump shut-off valve and single-tool removal provide quick, easy pump replacement



Quick plug-in hose/gun pairs

Quick connect I-O & Profibus® plugs

Specifications

Type of System	Release-coated grid and reservoir Spur-gear pump with variable speed AC motor	
Number of Pumps	1 or 2	
Maximum Pump Rate^{1 & 3}	1.4 to 82 kg/hr (3 to 181 lb/hr)	
Filter Type	Saturn® basket-style filter	
Maximum Working Hydraulic Pressure	85 bars/8.5 MPa (1230 psi)	
Operating Temperature Range⁴	40 to 230°C (100 to 450°F)	
Ambient Temperature Range	0° to 50°C (32 to 122°F)	
Temperature Control Stability	±1°C (2°F)	
Electrical Service⁵	240 VAC 1 phase 50/60 Hz ⁶ 200 VAC 3 phase 50/60 Hz ⁷ 200 to 240 VAC 3 phase 50/60 Hz 380 to 415 VAC-Y (3 phase N/PE) 50/60 Hz 400 VAC 3 phase 50/60 Hz ⁷ 480 VAC 3 phase 50/60 Hz ⁷	

Maximum System Power Capacity	12 liter	25 liter
2 hoses/guns	6960 watts	9610 watts
4 hoses/guns	10560 watts	13210 watts
6 hoses/guns	14160 watts	16810 watts

Input/Output Capability Standard
7 outputs
10 inputs

Maximum Pressure Sensors 2

Melter Dimensions (W x H x D)
885 x 1382 x 582 mm
(34.8 x 54.4 x 22.9 in)

Installation Dimensions (W x H x D)
1445 x 1382 x 831 mm
(56.9 x 54.4 x 32.7 in)

Protection IP54

¹ Actual rates will vary depending on adhesive type, application parameters and input voltage.
² Weight depends on melter configuration.
³ Range given is for maximum pump rate of various pumps available.
⁴ High temperature unit available with operating range of 40 to 250°C (100 to 480°F).
⁵ Permitted deviation from rated line voltage is ±10%.
⁶ 12-liter melter only; there are hose/gun pair capacity restrictions.
⁷ With integrated transformer.

Casters optional.

Profibus optional.



	VersaBlue 12	VersaBlue 25
Holding Capacity	12 L (732 in ³) 11.6 kg (25.6 lb)	25 L (1526 in ³) 24.3 kg (53.4 lb)
Throughput (per hour)¹	18 kg (39.6 lb)	40 kg (88 lb)
Melt Rate (per hour)¹	14 kg (30.8 lb)	25 kg (55 lb)
Weight (empty)²	190 kg (418 lb)	225 kg (495 lb)
Number of Guns	2, 4 or 6	2, 4 or 6

VxWorks is a registered trademark of Wind River Systems Inc.
Profibus is a registered trademark of Profibus International

For more information, talk with your Nordson representative or contact your Nordson regional office.

United States

Duluth, Georgia
Telephone: (800) 683-2314
Toll-free Facsimile:
(866) 667-3329

Canada

Markham, Ontario
Telephone: (800) 463-3200
Facsimile: (905) 475-8821

Europe

Lüneburg, Germany
Telephone: (49) 4131-894-0
Facsimile: (49) 4131-894-149

Japan

Tokyo, Japan
Telephone: (81) 3-5762-2700
Facsimile: (81) 3-5762-2701

**Asia/Australia/
Latin America**

Amherst, Ohio
Telephone: (440) 985-4797
Facsimile: (440) 985-1096

www.nordson.com



When you expect more.®